



DONNING & DOFFING of PPE in LABORATORY

1. Introduction

This document describes about Personal protective equipment (PPE); equipment must be worn to minimize exposure to occupational hazards that cause serious workplace injuries and illnesses.

2. Items involved in PPE

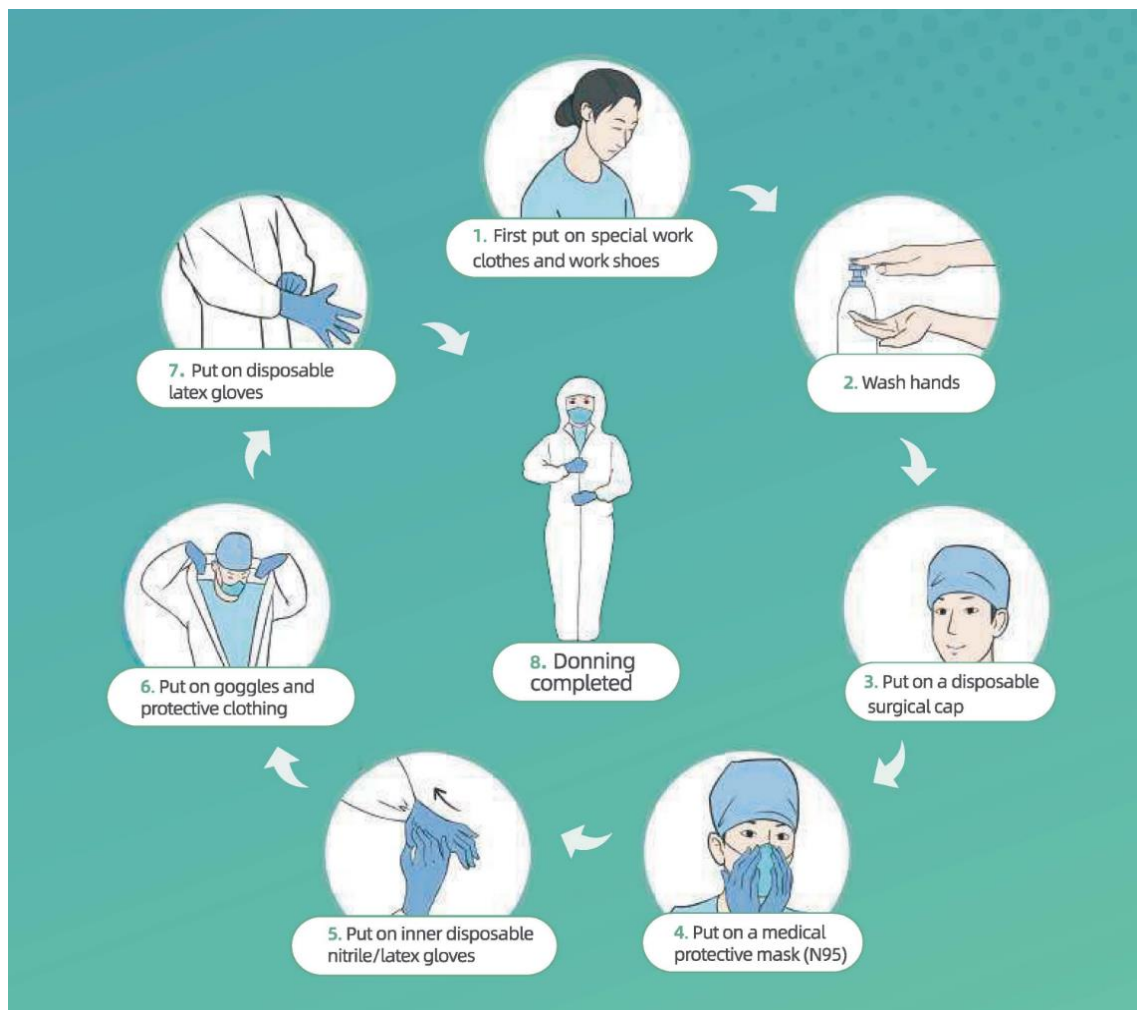
- Cap
- N95 Mask
- Googles/ Face shield
- Coverall suit/ Gown/ Apron (Water proof if available)
- Gloves
- Leak proof lab shoes

Lab technician must wear PPE during sample collection and testing process.

DISPOSABLE			CLEAN AND DISINFECTED		
CAP	MASK N95	NITRIL GLOVES (x2)	GOGGLE	FACESHIELD	LEAKPROOF SHOES
					
COVERALL SUIT		GOWN (Alternative)	VINYL APRON (Alternative)		
					



3. DONNING of PPE

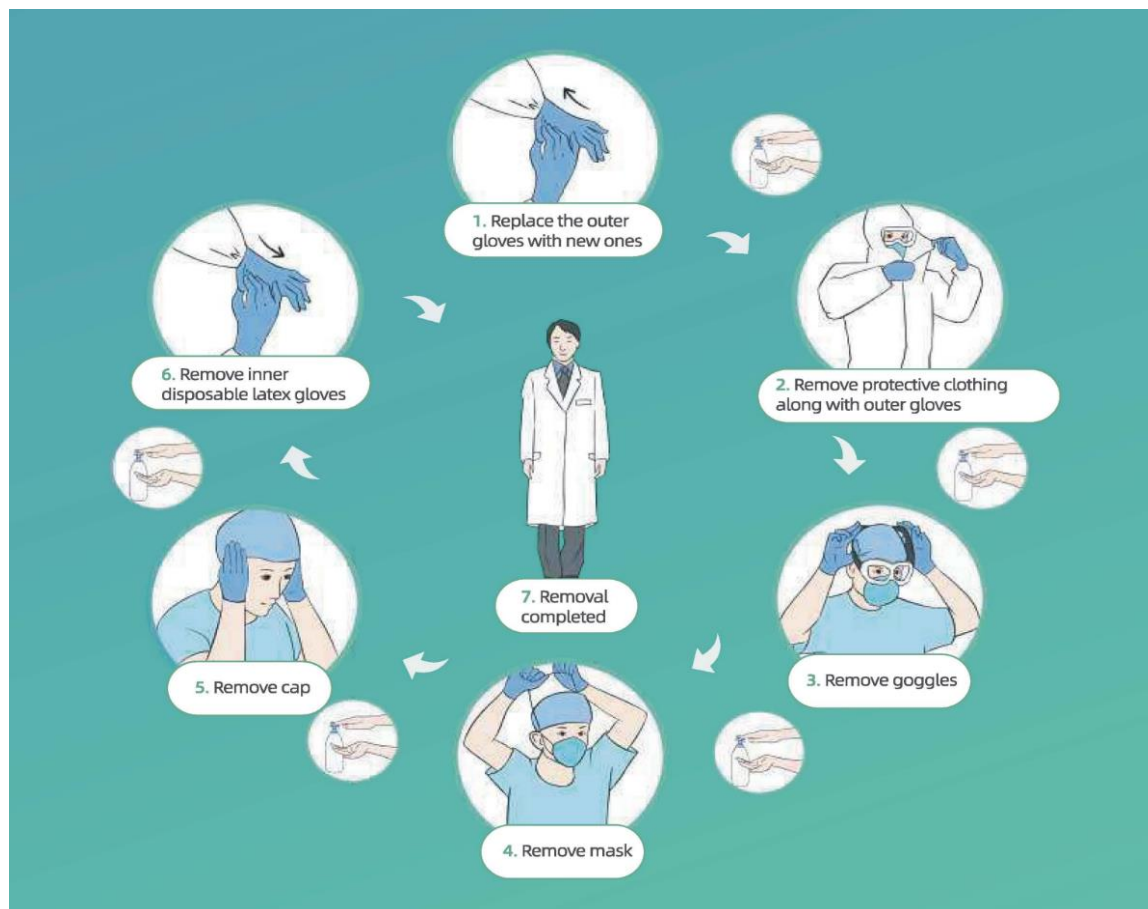


When laboratory personnel enter the PPE Donning room:

1. **Identify and gather the proper PPE to don. Put on special work clothes and cover shoe.**
2. **Perform hand hygiene using hand sanitizer.**
3. **Put on disposable surgical cap first.**
4. **Put on medical protective mask (N95) or use respirator if available.**
5. **Put on inner disposable nitrile gloves.**
6. **Put on goggles and protective full body clothing.**
7. **Put on outer disposable latex gloves.**
8. **After donning completed, the laboratory personnel may enter the room.**



4. DOFFING OF PPE



When laboratory personnel enter the PPE Doffing room:

1. **Replace the outer gloves with new ones. After that, use hand sanitizer or ethanol spray.**
2. **Remove protective full body clothing along with outer gloves without touching the surface of PPE. Use hand sanitizer.**
3. **Remove goggles. Remember to sanitize the glove.**
4. **Remove N95 mask and wash hands.**
5. **After that, remove disposable hair cap and wash hands.**
6. **Remove inner disposable gloves and wash hands.**
7. **If doffing complete, wash hands and enter the clean area.**



Reference

- <https://www.process.st/checklist/covid-19-procedure-protocol-for-donning-and-removing-ppe/>
- <https://www.cdc.gov/coronavirus/2019-ncov/hcp/using-ppe.html>
- https://www.who.int/csr/disease/ebola/put_on_ppequipment.pdf